



PRICE LIST 2021

(With effect from May 20th, 2021)

ELECTRICAL MEASUREMENT

- Digital Meter
- Analog Meter
- Current Transformer
- Automatic Power Factor Controller
- Capacitor

ELECTRICAL PROTECTION & CONTROL

- Line Monitoring
- Current Monitoring
- Motor & Pump Protection
- Digital Time Switch
- Analog Timer

ELECTRICAL MEASUREMENT

Page

• Multifunction Meters	5
• Plug-N-Wire Multifunction Meter	6
• Energy Meters	8
• SELCOM and Communication Gateways	9
• Digital Panel Meters	10
• Analog Meters	12
• Current Transformers	14
• Automatic Power Factor Controllers	19
• Heavy Duty Capacitors	20

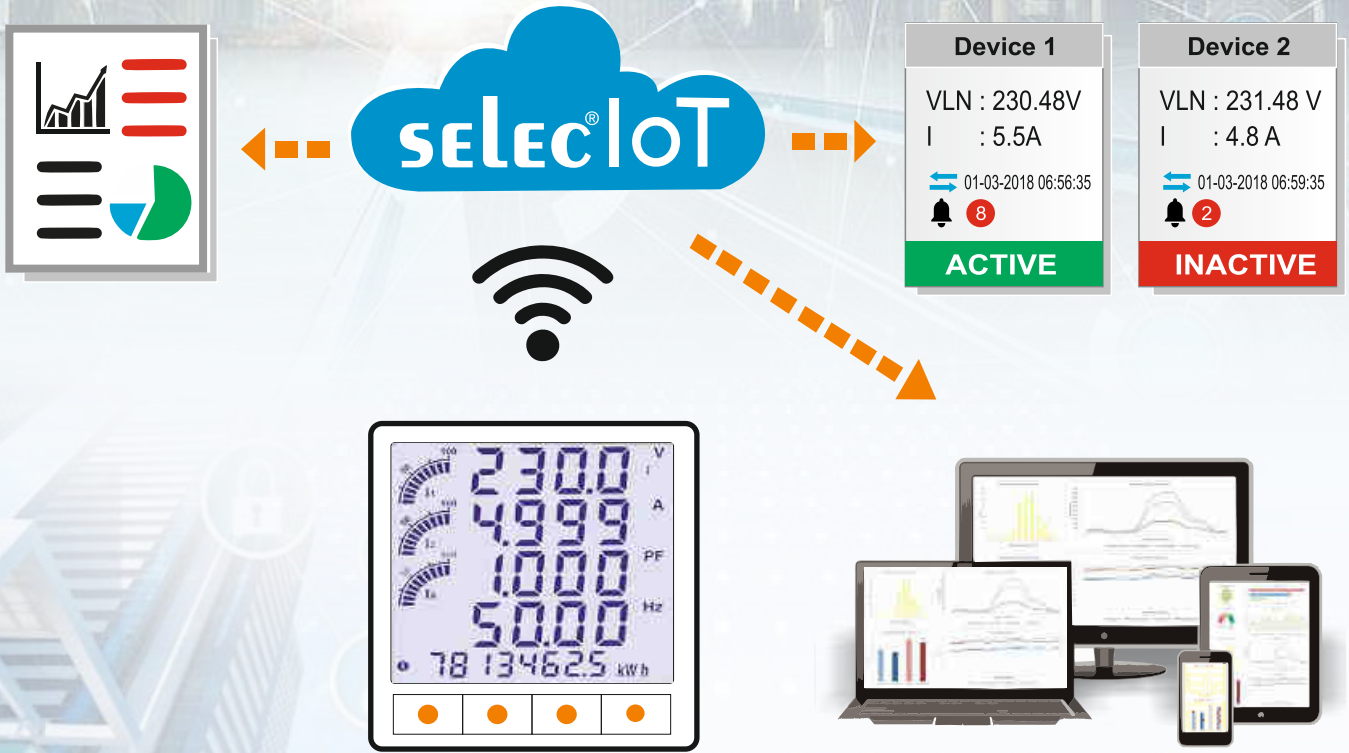
ELECTRICAL PROTECTION & CONTROL

Page

• Line Monitoring Series	21
• Current Monitoring Series	22
• Motor & Pump Protection Relay	24
• Time Switch & Analog Timers	25
• Alarm Annunciator	26

ENERGY MANAGEMENT *New*

PRICE ON REQUEST



Introducing Selec IoT - Our 1st Cloud Based EMS

Selec IoT is a powerful cloud-based energy management solution designed to make your operations simpler, effective and more convenient, enhancing the reliability of your processes and assets. This enables a harmonious network ecosystem of sensors, gateways, and system integrators that enables rapid deployment of real-time applications.

Download our free Energy management app, choose from a variety of subscriptions to meet your needs, or connect with our local experts to implement the solution.

- Maximize Operational Efficiency
- Network Management
- Real time Monitoring
- Data Logging
- Events and Alarms
- Dashboard Analysis
- Cost Management
- Energy Billing
- Detailed Reports
- User Groups

Note:

www.selec.com

Page 4

Pricelist 2021 (w.e.f. May 20th, 2021)

selec

MULTIFUNCTION METERS



LCD MULTIFUNCTION METER

- Energy Standard - Class 1.0 as per IEC 62053-21
- Per-phase Voltage, Ampere, PF, Hz, W, Wh, VA, VAh, VAR, VARh
- Max Demand & Import / Export parameter measurement (MFM384, MFM284)
- %THD & Ind. harmonics up to 31st level (MFM384, MFM284)
- RS485 Communication MODBUS RTU Protocol
- Pulse output
- RoHS Compliant

Product Code	Description	HSN Code	Unit MRP
LCD MULTIFUNCTION METER			
MFM384-R-C-CE	Rail mount LCD multifunction meter with RS485 communication, 85 to 270V AC	90303390	7287
MFM384-C-CE * # \$	LCD multifunction meter with RS485 communication, %THD up to 31 st level, 85 to 270V AC, Class 1 (Class 0.5 option)		7287
MFM284-C-CE	LCD multifunction meter with RS485 communication, 72 x 72 mm size, 85 to 270V AC		6747
MFM383A-C-CE	LCD multifunction meter with RS485 communication, 85 to 270V AC		5829
MFM383A *	LCD multifunction meter, 85 to 270V AC		4955



LED MULTIFUNCTION METER

- Energy Standard - Class 1.0 as per IEC 62053-21
- Per-phase Voltage, Ampere, PF, Hz, W, Wh, VA, VAh, VAR, VARh
- Max Demand & Import / Export parameter measurement (MFM376-C-CE)
- %THD & Ind. harmonics up to 31st level (MFM376-C-CE)
- RS485 Communication MODBUS RTU Protocol
- Pulse output
- RoHS Compliant

Product Code	Description	HSN Code	Unit MRP
LED MULTIFUNCTION METER			
MFM376-C-CE \$	LED multifunction meter with RS485 communication, %THD up to 31 st level, 40 to 270V DC & 85 to 270V AC	90303390	5246
MFM376-230VAC	LED multifunction meter, 230V AC		3862
MFM391 <i>New</i>	LED multifunction meter, Measures V, A, F with Power and PF, 85 to 270V AC		1918

*Save Time,
Save Money*

PLUG-N-WIRE MULTIFUNCTION METER



PLUG-N-WIRE MULTIFUNCTION METER

- Energy Standard - Class 1.0 as per IEC 62053-21
- Single and Three phase network compatible, Self-Powered
- RJ45 connector, 330mV Output
- Safe to leave transformers on load with output disconnected
- Available as 1 / 2 / 4 channel system, Rail/Panel mount option
- Supplied with or without cables, Accessories to suit requirements
- RS485 Communication MODBUS RTU Protocol
- RoHS Compliant

Product Code	Description	HSN Code	Unit MRP
PLUG-N-WIRE METER - TIME SAVING SOLUTION			
MRJ4M-QUAD <i>New</i>	Rail mount LCD Plug-N-Wire multifunction meter with RJ45 current input, 4 load monitoring and RS485 communication, 60 to 300V AC	90303390	12561
MRJ4M-SL #	Rail mount LCD Plug-N-Wire multifunction meter with RJ45 current input, Dual load monitoring and RS485 communication, 60 to 300V AC		9020
MRJ4M #	Rail mount LCD Plug-N-Wire multifunction meter with RJ45 current input and RS485 communication, 60 to 300V AC		7473
MRJ385-G-PNW #	LCD Plug-N-Wire multifunction meter with RJ45 current input, RS485 communication, 60 to 300V AC		7947
ACCESSORIES - PLUG-N-WIRE			
POWER & COMMUNICATION CABLE			
PWCON-F	Plug-N-Wire connector Female type	85444299	143
PWCON-M	Plug-N-Wire connector Male type		148
PWCBL_CON-F-1	Plug-N-Wire Power cable with Female type connector, 1 Meter length		424
PWCBL_CON-F-3	Plug-N-Wire Power cable with Female type connector, 3 Meter length		885
PWCBL_CON-M/F-1	Plug-N-Wire Daisy chain cable with Male & Female type connectors, 1 Meter length		586
PWCBL_CON-M/F-3	Plug-N-Wire Daisy chain cable with Male & Female type connectors, 3 Meter length		1074
ACH-003	RS485 communication for MRJ4M-QUAD – RJ25 to RJ25 (6Pin)	85043100	490
ACH-004	Cable to connect MRJ Meter with PWCT/PLCT – RJ45 to RJ45 (8Pin)		443
CTV CONVERTER 1A/330 mV	Converter used with PLCT series	85043100	1109

Note: * UL variant available # MID variant available \$ Class 0.5s variant available

Pricelist 2021 (w.e.f. May 20th, 2021)

Product Code	Description	HSN Code	Unit MRP
CURRENT TRANSFORMERS & CONVERTERS			
PLCT 21/25 60 /1A VA 1 CL 3	60A Plug-N-Wire CT - To be used with CTV Converter	85043100	1156
PLCT 21/25 100 /1A VA 1 CL 3	100A Plug-N-Wire CT - To be used with CTV Converter		1217
PLCT 21/25 125 /1A VA 1.5 CL 1	125A Plug-N-Wire CT - To be used with CTV Converter		1263
PLCT 21/25 150 /1A VA 2.5 CL 0.5	150A Plug-N-Wire CT - To be used with CTV Converter		1300
PLCT 21/25 160 /1A VA 2.5 CL 0.5	160A Plug-N-Wire CT - To be used with CTV Converter		1325
PLCT 21/25 200 /1A VA 3 CL 0.5	200A Plug-N-Wire CT - To be used with CTV Converter		1417
PLCT 21/25 250 /1A VA 3 CL 0.5	250A Plug-N-Wire CT - To be used with CTV Converter		1537
PWCT 15.5/25 60A/330mV	60A Plug-N-Wire CT		4377
PWCT 15.5/25 100A/330mV	100A Plug-N-Wire CT		4377
PWCT 15.5/25 125A/330mV	125A Plug-N-Wire CT		4377
PWCT 15.5/25 150A/330mV	150A Plug-N-Wire CT		4377
PWCT 15.5/25 160A/330mV	160A Plug-N-Wire CT		4377
PWCT 16/20 60A/330mV	60A Plug-N-Wire CT		4377
PWCT 16/20 100A/330mV	100A Plug-N-Wire CT		4377
PWCT 16/20 125A/330mV	125A Plug-N-Wire CT		4377
PWCT 16/20 150A/330mV	150A Plug-N-Wire CT		4377
PWCT 16/20 160A/330mV	160A Plug-N-Wire CT		4377
PWCT 21/25 60A/330mV	60A Plug-N-Wire CT		4377
PWCT 21/25 100A/330mV	100A Plug-N-Wire CT		4377
PWCT 21/25 125A/330mV	125A Plug-N-Wire CT		4377
PWCT 21/25 150A/330mV	150A Plug-N-Wire CT		4377
PWCT 21/25 160A/330mV	160A Plug-N-Wire CT		4377
PWCT 21/25 200A/330mV	200A Plug-N-Wire CT		4377
PWCT 21/25 250A/330mV	250A Plug-N-Wire CT		4377
PWCT 31/31 250A/330mV	250A Plug-N-Wire CT		4752
PWCT 31/31 300A/330mV	300A Plug-N-Wire CT		4752
PWCT 31/31 400A/330mV	400A Plug-N-Wire CT		4752
PWCT 31/31 500A/330mV	500A Plug-N-Wire CT		4752
PWCT 31/31 600A/330mV	600A Plug-N-Wire CT		4752
PWCT 31/31 630A/330mV	630A Plug-N-Wire CT		4752
PWCT 54/50 800A/330mV	800A Plug-N-Wire CT		7940
PWCT 54/50 1000A/330mV	1000A Plug-N-Wire CT		7940
PWCT 54/50 1250A/330mV	1250A Plug-N-Wire CT		7940
PWCT 54/50 1600A/330mV	1600A Plug-N-Wire CT	7940	

Note:

Pricelist 2021 (w.e.f. May 20th, 2021)

ENERGY METERS



DIRECT MEASURING ENERGY METER

- Energy Standard - Class 1.0 as per IEC 62053-21
- Direct measuring up to 100A
- Multifunction parameter monitoring (Voltage, Ampere, PF, Hz, W, Wh, VA, VAh, VAR, VARh, Max Demand & Import / Export Energy)
- 2 Pulse outputs (1st fixed, 2nd Configurable)
- RS485 Communication MODBUS RTU Protocol
- RoHS Compliant

Product Code	Description	HSN Code	Unit MRP
DIRECT MEASURING ENERGY METER			
EM4M-3P-W-100A <i>New</i>	3Ø Direct 100A kWh meter, 85 to 285V AC (L-N), 154 to 494V AC (L-L) with built-in WIFI	90303390	9715
EM4M-3P-C-100A <i>New</i>	3Ø Direct 100A kWh meter, Self powered, 85 to 285V AC (L-N), 154 to 494V AC (L-L) with RS485 communication		7692
EM2M-1P-C-100A #	1Ø Direct 100A kWh meter, Self powered, 184 to 276V AC with RS485 communication		3271



CT OPERATED ENERGY METER

- Energy Standard - Class 1.0 as per IEC 62053-21
- Bright LED / LCD Displays
- RS485 Communication MODBUS RTU Protocol
- Pulse output (EM368-C-CU, EM306)
- RoHS Compliant

Product Code	Description	HSN Code	Unit MRP
CT OPERATED ENERGY METER			
EM368-C-CU	3Ø kWh meter with LCD display and RS485 communication, 85 to 270V AC, UL certified	90283010	4955
EM306-C-D <i>New</i>	3Ø kWh meter with LED display and RS485 communication, Dual source Energy measurement, 85 to 270V AC		3575
EM306 <i>New</i>	3Ø kWh meter with LED display, 85 to 270V AC		2845

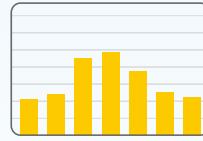
SELCOM

Energy Monitoring

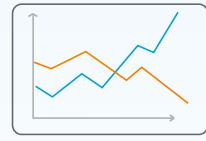
PRICE ON REQUEST



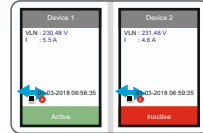
Monitor & Control



Energy Management



Analytics



Dashboards



Alarms

Configure



Local Monitoring



Control

Connect



Installed At:

- Cement Industries
- Education Institutes (Universities)
- Defence Sectors
- FMCG Companies
- Textile & Automobile Industries
- Food Processing Industries

FREE PC based software for monitoring 6 slave devices on USB port.

Product Code	Description	HSN Code	Unit MRP
COMMUNICATION GATEWAYS			
AC-S2E-02 <i>New</i>	Converter – RS485 to Ethernet	84715000	5345
AC-USB-RS485-02	Converter Cable – USB to RS485 (2 wire)		5023
AC-S2W-01-CE <i>New</i>	Converter – RS485 to WIFI		3446

Note:

Pricelist 2021 (w.e.f. May 20th, 2021)

DIGITAL PANEL METERS



DIGITAL PANEL METER - MULTIFUNCTION SERIES

- True RMS measurement of voltage, current, power, power factor & frequency
- 1Ø & 3Ø measurement available with LCD and LED display
- Models available with Built in CT for 30A and 80A measurement (800A measurement with converter)
- Models available with Plug-N-play RJ45 CT connection
- RS485 MODBUS communication with alarm relay (Optional)
- CE & RoHS certified

Product Code	Description	HSN Code	Unit MRP
DIGITAL PANEL METER - MULTIFUNCTION SERIES			
VAF36A-230-CE *	Digital VAF meter with LCD display, Built in RPM / RUN hour measurement, 230V AC	90303310	3643
VAF39A-1-230V	Digital VAF meter with LED display, Built in RPM / RUN hour measurement, 230V AC		2040
MVA593-CE <i>New</i>	Three phase VA meter up to 800A current measurement using external CT, CE certified		1505
MX300-1-C-CE <i>New</i>	Single Phase Multifunction Digital panel meter with 1 alarm relay output and RS485 MODBUS communication		2078
MX300-CE <i>New</i>	Single Phase Multifunction Digital panel meter with universal auxiliary supply of 85 to 300V AC/DC		1408
MVA591-80A-230V <i>New</i>	Single phase VA meter with measurement up to 80A with built in CT		1192
MVA591-30A-230V <i>New</i>	Single phase VA meter with measurement up to 30A with built in CT		1148



ACCESSORIES - DPM MULTIFUNCTION SERIES

- CT modules available in 1Ø & 3Ø for 80A and 250A measurement
- Converter with DIP switch for CT primary selection
- Up to 800A measurement with converter
- Plug-N-Play RJ45 connection

Product Code	Description	HSN Code	Unit MRP
ACCESSORIES - DPM MULTIFUNCTION SERIES			
CT 3PH-21x25mm-250A-G <i>New</i>	CT for MVA593 - 3 phase, 250A	85043100	1322
CT 3PH-D13mm-80A-G <i>New</i>	CT for MVA593 - 3 phase, 80A		769
3PH 5A CONVERTER-G <i>New</i>	Converter for MVA593		686
CT 1PH-30x10mm-250A-G <i>New</i>	CT for MVA593 - 1 phase, 250A		681
CT 1PH-D13mm-80A-G <i>New</i>	CT for MVA593 - 1 phase, 80A		474

Note: * UL variant available

Pricelist 2021 (w.e.f. May 20th, 2021)



DIGITAL PANEL METER - VOLTMETER

- Class 0.5 accuracy
- True RMS voltage measurement
- Available in LCD and LED display
- Analog style bar graph model available
- PT programmable (For three phase variant)
- CE & RoHS certified

Product Code	Description	HSN Code	Unit MRP
DIGITAL PANEL METERS- VOLTMETER			
MV2307-230V-CE	3Ø Digital voltmeter with LCD display, Bar graph representation for voltage, 230V AC	90303310	1881
MV334-230V	3Ø Digital voltmeter with LED display, 230V AC		1401
MV507-230V-CE	1Ø Digital voltmeter with LCD display, Bar graph representation for voltage, 230V AC		1390
MV15	1Ø Digital voltmeter with LED display, 230V AC		845
MV205	1Ø Digital voltmeter with LED display, 230V AC		845
MV305	1Ø Digital voltmeter with LED display, 230V AC		845



DIGITAL PANEL METER - AMMETER

- Class 0.5 accuracy
- True RMS voltage measurement
- Available in LCD and LED display
- Analog style bar graph model available
- CT programmable
- CE & RoHS certified

Product Code	Description	HSN Code	Unit MRP
DIGITAL PANEL METERS- AMMETER			
MA2301-230V-CE	3Ø Digital ammeter with LCD display, Bar graph representation for current, 230V AC	90303310	1962
MA12-75mV-DC	1Ø Digital ammeter with LED display, 75mV DC shunt input, 230V AC		1662
MA335-230VAC	3Ø Digital ammeter with LED display, 230V AC		1579
MA12-20A-AC	1Ø Digital ammeter with LED display, 20A direct input, 230V AC		1503
MA501-230V-CE	1Ø Digital ammeter with LCD display, Bar graph representation for current, 230V AC		1468
MA12	1Ø Digital ammeter with LED display, 230V AC		901
MA202	1Ø Digital ammeter with LED Display, 230V AC		901
MA302	1Ø Digital ammeter with LED display, 230V AC		901

Note:

Pricelist 2021 (w.e.f. May 20th, 2021)

ANALOG METERS



ANALOG PANEL METER - VOLTMETER

- True RMS voltage measurement
- Class 1.5 accuracy (Class 1 available)
- Available in 300V and 500V
- Non-Linear Scale
- Knife Edge Pointer
- Grey Lexan Housing
- Panel mount
- CE & RoHS certified

Product Code	Description	HSN Code	Unit MRP
ANALOG PANEL METER - VOLTMETER			
AM-V-2-N	Analog voltmeter, Class 1.5, 300V AC	90303310	527
AM-V-2-L	Analog voltmeter, Class 1.5, 500V AC		541
AM-V-3-N	Analog voltmeter, Class 1.5, 300V AC		569
AM-V-3-L	Analog voltmeter, Class 1.5, 500V AC		584



ANALOG PANEL METER - AMMETER

- True RMS current measurement
- Class 1.5 accuracy
- Available with 6 times suppression
- Scale interchangeability
- Non-Linear Scale
- Knife Edge Pointer
- Grey Lexan Housing
- Panel mount
- CE & RoHS certified

Product Code	Description	HSN Code	Unit MRP
ANALOG PANEL METER - AMMETER - CT OPERATED			
AM-I-2-5A-6S-WD	Analog ammeter without dial plate, 5A AC, Class 1.5, 6S suppressed scale	90303310	493
AM-I-2-5A-WD	Analog ammeter without dial plate, Class 1.5, 5AAC		493
AM-I-3-5A-6S-WD	Analog ammeter without dial plate, 5A AC, Class 1.5, 6S suppressed scale		533
AM-I-3-5A-WD	Analog ammeter without dial plate, Class 1.5, 5AAC		533
ANALOG PANEL METER - AMMETER - DIRECT TYPE			
AM-I-D-2-20A	Analog ammeter, Class 1.5, 20AAC direct input	90303310	533
AM-I-D-2-30A	Analog ammeter, Class 1.5, 30AAC direct input		533
AM-I-D-2-50A	Analog ammeter, Class 1.5, 50AAC direct input		572
AM-I-D-2-60A	Analog ammeter, Class 1.5, 60AAC direct input		572

Note:

Pricelist 2021 (w.e.f. May 20th, 2021)

Product Code	Description	HSN Code	Unit MRP
AM-I-D-2-80A	Analog ammeter, Class 1.5, 80AAC direct input	90303310	653
AM-I-D-2-100A	Analog ammeter, Class 1.5, 100AAC direct input		653
AM-I-D-3-20A	Analog ammeter, Class 1.5, 20AAC direct input		572
AM-I-D-3-30A	Analog ammeter, Class 1.5, 30AAC direct input		611
AM-I-D-3-50A	Analog ammeter, Class 1.5, 50AAC direct input		611
AM-I-D-3-60A	Analog ammeter, Class 1.5, 60AAC direct input		693
AM-I-D-3-80A	Analog ammeter, Class 1.5, 80AAC direct input		693
AM-I-D-3-100A	Analog ammeter, Class 1.5, 100AAC direct input		693



ANALOG PANEL METER - POWER FACTOR

- Class 1.5 accuracy
- 0.5 CAP to 0.5 IND measurement
- Non-Linear Scale
- Knife Edge Pointer
- Grey Lexan Housing
- Panel mount
- CE & RoHS certified

Product Code	Description	HSN Code	Unit MRP
ANALOG PANEL METER - POWER FACTOR			
AM-PF-3-3P1E-0.5 CAP-1-0.5 IND-415V-5A	Analog power factor meter, Class 1.5, 0.5 CAP - 0.5 IND, 415V AC, 96 x 96mm	90303310	995
AM-PF-2-3P1E-0.5 CAP-1-0.5 IND-415V-5A	Analog power factor meter, Class 1.5, 0.5 CAP - 0.5 IND, 415V AC, 72 x 72mm		956
AM-PF-3-3P1E-0.5 CAP-1-0.5 IND-440V-5A	Analog power factor meter, Class 1.5, 0.5 CAP - 0.5 IND, 440V, 96 x 96mm		995
AM-PF-2-3P1E-0.5 CAP-1-0.5 IND-440V-5A	Analog power factor meter, Class 1.5, 0.5 CAP - 0.5 IND, 440V, 72 x 72mm		956



ANALOG PANEL METER - FREQUENCY METER

- Class 1.0 accuracy
- 45 to 65Hz measurement
- Knife Edge Pointer
- Linear Scale
- Grey Lexan Housing
- Panel mount
- CE & RoHS certified

Product Code	Description	HSN Code	Unit MRP
ANALOG PANEL METER - FREQUENCY METER			
AM-Hz-3-45-65-440V	Analog frequency meter, Class 1.0, 45-65Hz, 440V AC	90303310	945
AM-Hz-3-45-65-220V	Analog frequency meter, Class 1.0, 45-65Hz, 220V AC		945
AM-Hz-2-45-65-440V	Analog frequency meter, Class 1.0, 45-65Hz, 440V AC		903
AM-Hz-2-45-65-220V	Analog frequency meter, Class 1.0, 45-65Hz, 220V AC		903

ANALOG PANEL METER - ACCESSORIES

Product Code	Description	HSN Code	Unit MRP
Analog Panel Meter - Accessories			
TC-2	Terminal cover for 72 x 72 Analog meter for Ammeter / Voltmeter / Direct type up to 30A	39269099	44
TC-3	Terminal cover for 96 x 96 Analog meter Ammeter / Voltmeter / Direct type up to 30A		52
TC-D-2	Terminal cover for 72 x 72 Analog meter for Direct type Ammeter above 30A		52
TC-D-3	Terminal cover for 96 x 96 Analog meter for Direct type Ammeter above 30A		55
SCL-AM-I-2-XXXX/5A	Scale Plate 72 x 72 mm - Set of 10	90303310	47
SCL-AM-I-3-XXXX/5A	Scale Plate 96 x 96 mm - Set of 10		47
SCL-AM-I-2-XXXX/5A-6S	Scale Plate 72 x 72 mm - 6 Times suppressed scale - Set of 10		47
SCL-AM-I-3-XXXX/5A-6S	Scale Plate 96 x 96 mm - 6 Times suppressed scale - Set of 10		47

Note:

Pricelist 2021 (w.e.f. May 20th, 2021)

CURRENT TRANSFORMERS

New



CURRENT TRANSFORMERS - SPLIT CORE

- Protection against unauthorized manipulation of the connections by means of sealable covers
- Nominal Rating ranges from 100A to 6000A
- Snap closing / opening feature
- Non Flammable and self extinguishing.
- Mounting types: Base / Busbar / Wall mount

Product Code	Description	HSN Code	Unit MRP
CURRENT TRANSFORMERS - SPLIT CORE			
SCCT 30/20 100/5 A VA 1 CL 1 -CE	Split core current transformer. Inner Dimensions: 30/20, Rating: 100/5A, Accuracy class 1	85043100	2352
SCCT 30/20 100/5A VA 1.5 CL 3 -CE	Split core Current transformer. Inner Dimensions: 30/20, Rating: 100/5A, Accuracy class 1.5		2352
SCCT 30/20 150/5A VA 1 CL 0.5 -CE	Split core Current transformer. Inner Dimensions: 30/20, Rating: 150/5A, Accuracy class 0.5		2352
SCCT 30/20 150/5A VA 1.5 CL 3 -CE	Split core Current transformer. Inner Dimensions: 30/20, Rating: 150/5A, Accuracy class 3		2352
SCCT 30/20 200/5A VA 1 CL 0.5 -CE	Split core Current transformer. Inner Dimensions: 30/20, Rating: 200/5A, Accuracy class 0.5		2352
SCCT 30/20 200/5A VA 1.5 CL 1 -CE	Split core Current transformer. Inner Dimensions: 30/20, Rating: 200/5A, Accuracy class 1		2352
SCCT 30/20 200/5A VA 2.5 CL 3 -CE	Split core Current transformer. Inner Dimensions: 30/20, Rating: 200/5A, Accuracy class 3		2352
SCCT 30/20 250/5A VA 1.5 CL 0.5 -CE	Split core Current transformer. Inner Dimensions: 30/20, Rating: 250/5A, Accuracy class 0.5		2352
SCCT 30/20 250/5A VA 2 CL 1 -CE	Split core Current transformer. Inner Dimensions: 30/20, Rating: 250/5A, Accuracy class 1		2352
SCCT 30/20 250/5A VA 3.75 CL 3 -CE	Split core Current transformer. Inner Dimensions: 30/20, Rating: 250/5A, Accuracy class 3		2352
SCCT 30/20 300/5A VA 2.5 CL 0.5 -CE	Split core Current transformer. Inner Dimensions: 30/20, Rating: 300/5A, Accuracy class 0.5		2352
SCCT 30/20 300/5A VA 3.75 CL 1 -CE	Split core Current transformer. Inner Dimensions: 30/20, Rating: 250/5A, Accuracy class 1		2352
SCCT 30/20 300/5A VA 5 CL 3 -CE	Split core Current transformer. Inner Dimensions: 30/20, Rating: 250/5A, Accuracy class 3		2352
SCCT 30/20 400/5A VA 2.5 CL 0.5 -CE	Split core Current transformer. Inner Dimensions: 30/20, Rating: 400/5A, Accuracy class 0.5		2352
SCCT 30/20 400/5A VA 5 CL 1 -CE	Split core Current transformer. Inner Dimensions: 30/20, Rating: 400/5A, Accuracy class 1		2352
SCCT 30/20 400/5A VA 10 CL 3 -CE	Split core Current transformer. Inner Dimensions: 30/20, Rating: 400/5A, Accuracy class 3		2352
SCCT 80/50 250/5A VA1 CL 0.5 -CE	Split core Current transformer. Inner Dimensions: 80/50, Rating: 250/5A, Accuracy class 0.5		2868
SCCT 80/50 250/5A VA 2 CL 1 -CE	Split core Current transformer. Inner Dimensions: 80/50, Rating: 250/5A, Accuracy class 1		2868
SCCT 80/50 250/5A VA 3.75 CL 3 -CE	Split core Current transformer. Inner Dimensions: 80/50, Rating: 250/5A, Accuracy class 3.75		2868
SCCT 80/50 300/5A VA1.5 CL 0.5 -CE	Split core Current transformer. Inner Dimensions: 80/50, Rating: 300/5A, Accuracy class 0.5		2868
SCCT 80/50 300/5A VA 3 CL 1 -CE	Split core Current transformer. Inner Dimensions: 80/50, Rating: 300/5A, Accuracy class 1		2868
SCCT 80/50 300/5A VA 5 CL 3 -CE	Split core Current transformer. Inner Dimensions: 80/50, Rating: 300/5A, Accuracy class 3		2868
SCCT 80/50 400/5A VA1.5 CL 0.5 -CE	Split core Current transformer. Inner Dimensions: 80/50, Rating: 400/5A, Accuracy class 0.5		2868
SCCT 80/50 400/5A VA 3 CL 1 -CE	Split core Current transformer. Inner Dimensions: 80/50, Rating: 400/5A, Accuracy class 1		2868

Note:

Pricelist 2021 (w.e.f. May 20th, 2021)

Product Code	Description	HSN Code	Unit MRP
SCCT 80/50 400/5A VA 10 CL 3 -CE	Split core Current transformer. Inner Dimensions: 80/50, Rating: 400/5A, Accuracy class 3	85043100	2868
SCCT 80/50 500/5A VA 2.5 CL 0.5 -CE	Split core Current transformer. Inner Dimensions: 80/50, Rating: 500/5A, Accuracy class 0.5		2868
SCCT 80/50 500/5A VA 5 CL 1 -CE	Split core Current transformer. Inner Dimensions: 80/50, Rating: 500/5A, Accuracy class 1		2868
SCCT 80/50 500/5A VA 15 CL 3 -CE	Split core Current transformer. Inner Dimensions: 80/50, Rating: 500/5A, Accuracy class 3		2868
SCCT 80/50 600/5A VA 2.5 CL 0.5 -CE	Split core Current transformer. Inner Dimensions: 80/50, Rating: 600/5A, Accuracy class 0.5		2868
SCCT 80/50 600/5A VA 5 CL 1 -CE	Split core Current transformer. Inner Dimensions: 80/50, Rating: 600/5A, Accuracy class 1		2868
SCCT 80/50 600/5A VA 15 CL 3 -CE	Split core Current transformer. Inner Dimensions: 80/50, Rating: 600/5A, Accuracy class 3		2868
SCCT 80/50 750/5A VA 3 CL 0.5 -CE	Split core Current transformer. Inner Dimensions: 80/50, Rating: 750/5A, Accuracy class 0.5		2868
SCCT 80/50 750/5A VA 7.5 CL 1 -CE	Split core Current transformer. Inner Dimensions: 80/50, Rating: 750/5A, Accuracy class 1		2868
SCCT 80/50 750/5A VA 20 CL 3 -CE	Split core Current transformer. Inner Dimensions: 80/50, Rating: 750/5A, Accuracy class 3		2868
SCCT 80/50 800/5A VA 3 CL 0.5 -CE	Split core Current transformer. Inner Dimensions: 80/50, Rating: 800/5A, Accuracy class 0.5		2868
SCCT 80/50 800/5A VA 7.5 CL 1 -CE	Split core Current transformer. Inner Dimensions: 80/50, Rating: 800/5A, Accuracy class 1		2868
SCCT 80/50 800/5A VA 20 CL 3 -CE	Split core Current transformer. Inner Dimensions: 80/50, Rating: 800/5A, Accuracy class 3		2868
SCCT 80/50 1000/5A VA 5 CL 0.5 -CE	Split core Current transformer. Inner Dimensions: 80/50, Rating: 1000/5A, Accuracy class 0.5		2868
SCCT 80/50 1000/5A VA 10 CL 1 -CE	Split core Current transformer. Inner Dimensions: 80/50, Rating: 1000/5A, Accuracy class 1		2868
SCCT 80/50 1000/5A VA 20 CL 3 -CE	Split core Current transformer. Inner Dimensions: 80/50, Rating: 1000/5A, Accuracy class 3		2868
SCCT 80/80 250/5 A VA 1.5 CL 1 -CE	Split core Current transformer. Inner Dimensions: 80/80, Rating: 250/5A, Accuracy class 1		3476
SCCT 80/80 300/5 A VA 1.5 CL 1 -CE	Split core Current transformer. Inner Dimensions: 80/80, Rating: 250/5A, Accuracy class 1		3476
SCCT 80/80 400/5 A VA 1.5 CL 0.5 -CE	Split core Current transformer. Inner Dimensions: 80/80, Rating: 400/5A, Accuracy class 0.5		3476
SCCT 80/80 500/5 A VA 2.5 CL 0.5 -CE	Split core Current transformer. Inner Dimensions: 80/80, Rating: 500/5A, Accuracy class 0.5		3476
SCCT 80/80 600/5 A VA 2.5 CL 0.5 -CE	Split core Current transformer. Inner Dimensions: 80/80, Rating: 600/5A, Accuracy class 0.5		3476
SCCT 80/80 750/5 A VA 2.5 CL 0.5 -CE	Split core Current transformer. Inner Dimensions: 80/80, Rating: 750/5A, Accuracy class 0.5		3476
SCCT 80/80 800/5 A VA 2.5 CL 0.5 -CE	Split core Current transformer. Inner Dimensions: 80/80, Rating: 800/5A, Accuracy class 0.5		3476
SCCT 80/80 1000/5 A VA 5 CL 0.5 -CE	Split core Current transformer. Inner Dimensions: 80/80, Rating: 1000/5A, Accuracy class 1		3476
SCCT 120/80 500/5A VA 2.5 CL 0.5 -CE	Split core Current transformer. Inner Dimensions: 120/80, Rating: 500/5A, Accuracy class 0.5		4795
SCCT 120/80 500/5A VA 3.75 CL 1 -CE	Split core Current transformer. Inner Dimensions: 120/80, Rating: 500/5A, Accuracy class 1		4795
SCCT 120/80 500/5A VA 15 CL 3 -CE	Split core Current transformer. Inner Dimensions: 120/80, Rating: 500/5A, Accuracy class 3		4795
SCCT 120/80 600/5A VA 2.5 CL 0.5 -CE	Split core Current transformer. Inner Dimensions: 120/80, Rating: 600/5A, Accuracy class 0.5		4795
SCCT 120/80 600/5A VA 5 CL 1 -CE	Split core Current transformer. Inner Dimensions: 120/80, Rating: 600/5A, Accuracy class 1		4795
SCCT 120/80 600/5A VA 15 CL 3 -CE	Split core Current transformer. Inner Dimensions: 120/80, Rating: 600/5A, Accuracy class 3		4795
SCCT 120/80 750/5A VA 2.5 CL 0.5 -CE	Split core Current transformer. Inner Dimensions: 120/80, Rating: 750/5A, Accuracy class 0.5		4795
SCCT 120/80 750/5A VA 2.5 CL 1 -CE	Split core Current transformer. Inner Dimensions: 120/80, Rating: 750/5A, Accuracy class 1		4795
SCCT 120/80 750/5A VA 20 CL 3 -CE	Split core Current transformer. Inner Dimensions: 120/80, Rating: 750/5A, Accuracy class 3		4795
SCCT 120/80 800/5A VA 2.5 CL 0.5 -CE	Split core Current transformer. Inner Dimensions: 80/80, Rating: 800/5A, Accuracy class 0.5		4795
SCCT 120/80 800/5A VA 7.5 CL 1 -CE	Split core Current transformer. Inner Dimensions: 120/80, Rating: 800/5A, Accuracy class 1		4795
SCCT 120/80 800/5A VA 20 CL 3 -CE	Split core Current transformer. Inner Dimensions: 120/80, Rating: 800/5A, Accuracy class 3		4795
SCCT 120/80 1000/5A VA 5 CL 0.5 -CE	Split core Current transformer. Inner Dimensions: 120/80, Rating: 1000/5A, Accuracy class 0.5		4795
SCCT 120/80 1000/5A VA 10 CL 1 -CE	Split core Current transformer. Inner Dimensions: 120/80, Rating: 1000/5A, Accuracy class 1		4795
SCCT 120/80 1000/5A VA 20 CL 3 -CE	Split core Current transformer. Inner Dimensions: 120/80, Rating: 1000/5A, Accuracy class 3		4795
SCCT 120/80 1200/5A VA 7.5 CL 0.5 -CE	Split core Current transformer. Inner Dimensions: 120/80, Rating: 1200/5A, Accuracy class 0.5		4795
SCCT 120/80 1200/5A VA 15 CL 1 -CE	Split core Current transformer. Inner Dimensions: 120/80, Rating: 1200/5A, Accuracy class 1		4795
SCCT 120/80 1200/5A VA 30 CL 3 -CE	Split core Current transformer. Inner Dimensions: 120/80, Rating: 1200/5A, Accuracy class 3		4795
SCCT 120/80 1250/5A VA 7.5 CL 0.5 -CE	Split core Current transformer. Inner Dimensions: 120/80, Rating: 1250/5A, Accuracy class 0.5		4795
SCCT 120/80 1250/5A VA 15 CL 1 -CE	Split core Current transformer. Inner Dimensions: 120/80, Rating: 1250/5A, Accuracy class 1		4795
SCCT 120/80 1250/5A VA 30 CL 3 -CE	Split core Current transformer. Inner Dimensions: 120/80, Rating: 1250/5A, Accuracy class 3		4795
SCCT 120/80 1500/5A VA 7.5 CL 0.5 -CE	Split core Current transformer. Inner Dimensions: 120/80, Rating: 1500/5A, Accuracy class 0.5		4795
SCCT 120/80 1500/5A VA 10 CL 1 -CE	Split core Current transformer. Inner Dimensions: 120/80, Rating: 1500/5A, Accuracy class 1		4795
SCCT 120/80 1500/5A VA 30 CL 3 -CE	Split core Current transformer. Inner Dimensions: 120/80, Rating: 1500/5A, Accuracy class 3		4795
SCCT 120/80 1600/5A VA 10 CL 0.5 -CE	Split core Current transformer. Inner Dimensions: 120/80, Rating: 800/5A, Accuracy class 0.5	4795	

Note:

Pricelist 2021 (w.e.f. May 20th, 2021)

Product Code	Description	HSN Code	Unit MRP
SCCT 120/80 1600/5A VA 20 CL 1 -CE	Split core Current transformer. Inner Dimensions: 120/80, Rating: 1600/5A, Accuracy class 1	85043100	4795
SCCT 120/80 1600/5A VA 30 CL 3 -CE	Split core Current transformer. Inner Dimensions: 120/80, Rating: 1600/5A, Accuracy class 3		4795
SCCT 160/80 1000/5A VA10 CL 0.5 -CE	Split core Current transformer. Inner Dimensions: 160/80, Rating: 1000/5A, Accuracy class 0.5		7898
SCCT 160/80 1000/5A VA 15 CL 1 -CE	Split core Current transformer. Inner Dimensions: 160/80, Rating: 1000/5A, Accuracy class 1		7898
SCCT 160/80 1000/5A VA 20 CL 3 -CE	Split core Current transformer. Inner Dimensions: 160/80, Rating: 1000/5A, Accuracy class 3		7898
SCCT 160/80 1200/5 A VA 10 CL 0.5 -CE	Split core Current transformer. Inner Dimensions: 160/80, Rating: 1200/5A, Accuracy class 0.5		7898
SCCT 160/80 1250/5A VA10 CL 0.5 -CE	Split core Current transformer. Inner Dimensions: 160/80, Rating: 1250/5A, Accuracy class 0.5		7898
SCCT 160/80 1250/5A VA 15 CL 1 -CE	Split core Current transformer. Inner Dimensions: 160/80, Rating: 1250/5A, Accuracy class 1		7898
SCCT 160/80 1250/5A VA 20 CL 3 -CE	Split core Current transformer. Inner Dimensions: 160/80, Rating: 1250/5A, Accuracy class 31		7898
SCCT 160/80 1500/5A VA15 CL 0.5 -CE	Split core Current transformer. Inner Dimensions: 160/80, Rating: 1500/5A, Accuracy class 0.5		7898
SCCT 160/80 1500/5A VA 20 CL 1 -CE	Split core Current transformer. Inner Dimensions: 160/80, Rating: 1500/5A, Accuracy class 1		7898
SCCT 160/80 1500/5A VA 20 CL 3 -CE	Split core Current transformer. Inner Dimensions: 160/80, Rating: 1500/5A, Accuracy class 3		7898
SCCT 160/80 2000/5A VA15 CL 0.5 -CE	Split core Current transformer. Inner Dimensions: 160/80, Rating: 2000/5A, Accuracy class 0.5		7898
SCCT 160/80 2000/5A VA 20 CL 1 -CE	Split core Current transformer. Inner Dimensions: 160/80, Rating: 2000/5A, Accuracy class 1		7898
SCCT 160/80 2000/5A VA 30 CL 3 -CE	Split core Current transformer. Inner Dimensions: 160/80, Rating: 2000/5A, Accuracy class 3		7898
SCCT 160/80 2500/5A VA15 CL 0.5 -CE	Split core Current transformer. Inner Dimensions: 160/80, Rating: 2500/5A, Accuracy class 0.5		7898
SCCT 160/80 2500/5A VA 20 CL 1 -CE	Split core Current transformer. Inner Dimensions: 160/80, Rating: 2500/5A, Accuracy class 1		7898
SCCT 160/80 2500/5A VA 30 CL 3 -CE	Split core Current transformer. Inner Dimensions: 160/80, Rating: 2500/5A, Accuracy class 3		7898
SCCT 160/80 3000/5A VA 15 CL 0.5 -CE	Split core Current transformer. Inner Dimensions: 160/80, Rating: 3000/5A, Accuracy class 0.5		7898
SCCT 160/80 3000/5A VA 30 CL 1 -CE	Split core Current transformer. Inner Dimensions: 160/80, Rating: 3000/5A, Accuracy class 1		7898
SCCT 160/80 3000/5A VA 30 CL 3 -CE	Split core Current transformer. Inner Dimensions: 160/80, Rating: 3000/5A, Accuracy class 3		7898
SCCT 160/80 4000/5A VA 15 CL 0.5 -CE	Split core Current transformer. Inner Dimensions: 160/80, Rating: 4000/5A, Accuracy class 0.5		7898
SCCT 160/80 4000/5A VA 30 CL 1 -CE	Split core Current transformer. Inner Dimensions: 160/80, Rating: 4000/5A, Accuracy class 1		7898
SCCT 160/80 4000/5A VA 30 CL 3 -CE	Split core Current transformer. Inner Dimensions: 160/80, Rating: 4000/5A, Accuracy class 3		7898
SCCT 160/80 5000/5A VA 15 CL 0.5 -CE	Split core Current transformer. Inner Dimensions: 160/80, Rating: 5000/5A, Accuracy class 0.5		7898
SCCT 160/80 5000/5A VA 30 CL 1 -CE	Split core Current transformer. Inner Dimensions: 160/80, Rating: 5000/5A, Accuracy class 1		7898
SCCT 160/80 5000/5A VA 30 CL 3 -CE	Split core Current transformer. Inner Dimensions: 160/80, Rating: 5000/5A, Accuracy class 3		7898
SCCT 160/80 6000/5A VA 15 CL 0.5 -CE	Split core Current transformer. Inner Dimensions: 160/80, Rating: 6000/5A, Accuracy class 0.5		7898
SCCT 160/80 6000/5A VA 30 CL 1 -CE	Split core Current transformer. Inner Dimensions: 160/80, Rating: 6000/5A, Accuracy class 1		7898
SCCT 160/80 6000/5A VA 30 CL 3 -CE	Split core Current transformer. Inner Dimensions: 160/80, Rating: 6000/5A, Accuracy class 3		7898



CURRENT TRANSFORMER - SQUARE TYPE

- Available range: 30A - 4000A
- ASTA and UL certified
- Applicable with bus bar aperture upto 100mm
- Panel mount / Din rail mount (Requires additional accessory)

Product Code	Description	HSN Code	Unit MRP
CURRENT TRANSFORMER - SQUARE TYPE			
SPCT 50/ 30 60/5 A VA 1 CL 5 *	Bus bar CT with 60/5A, OD/ID: 50/30	85043100	325
SPCT 50/30 75/5A VA 1 CL 1 *	Bus bar CT with 75/5A, OD/ID: 50/30		325
SPCT 50/30 80/5A VA 1 CL 1 *	Bus bar CT with 80/5A, OD/ID: 50/30		325
SPCT 50/30 100/5A VA 1 CL 1 *	Bus bar CT with 100/5A, OD/ID: 50/30		325

Note:

Pricelist 2021 (w.e.f. May 20th, 2021)

Product Code	Description	HSN Code	Unit MRP
SPCT 50/30 125/5A VA 1.25 CL 1 *	Bus bar CT with 125/5A, OD/ID: 50/30	85043100	325
SPCT 50/30 160/5A VA 1.5 CL 1 *	Bus bar CT with 160/5A, OD/ID: 50/30		325
SPCT 50/30 200/5A VA 3 CL 1 *	Bus bar CT with 200/5A, OD/ID: 50/30		325
SPCT 50/30 250/5A VA 3 CL 1 *	Bus bar CT with 250/5A, OD/ID: 50/30		338
SPCT 50/30 300/5A VA 5 CL 1 *	Bus bar CT with 300/5A, OD/ID: 50/30		389
SPCT 50/30 400/5A VA 5 CL 1 *	Bus bar CT with 400/5A, OD/ID: 50/30		389
SPCT 62/ 22 30/5 A VA 1 CL 5 *	Bus bar CT with 30/5A, OD/ID: 62/22		584
SPCT 62/ 30 50/5 A VA 1 CL 3 *	Bus bar CT with 50/5A, OD/ID: 62/30		522
SPCT 62/ 30 50/5 A VA 1.5 CL 3 *	Bus bar CT with 50/5A, OD/ID: 62/30		522
SPCT 62/ 30 75/5 A VA 1 CL 3 *	Bus bar CT with 75/5A, OD/ID: 62/30		522
SPCT 62/ 30 75/5 A VA 3 CL 3 *	Bus bar CT with 75/5A, OD/ID: 62/30		540
SPCT 62/ 30 100/5 A VA 1 CL 1 *	Bus bar CT with 100/5A, OD/ID: 62/30		540
SPCT 62/ 30 100/5 A VA 3 CL 1 *	Bus bar CT with 100/5A, OD/ID: 62/30		543
SPCT 62/ 40 100/5 A VA 1 CL 1 *	Bus bar CT with 100/5A, OD/ID: 62/40		384
SPCT 62/ 40 125/5 A VA 1 CL 1 *	Bus bar CT with 125/5A, OD/ID: 62/40		384
SPCT 62/ 40 150/5 A VA 1.5 CL 1 *	Bus bar CT with 150/5A, OD/ID: 62/40		384
SPCT 62/ 40 150/5 A VA 3 CL 1 *	Bus bar CT with 150/5A, OD/ID: 62/40		463
SPCT 62/ 40 160/5 A VA 1.5 CL 1 *	Bus bar CT with 160/5A, OD/ID: 62/40		384
SPCT 62/ 40 200/5 A VA 2.5 CL 0.5 *	Bus bar CT with 200/5A, OD/ID: 62/40		384
SPCT 62/ 40 200/5 A VA 3 CL 1 *	Bus bar CT with 200/5A, OD/ID: 62/40		424
SPCT 62/ 40 250/5 A VA 2.5 CL 0.5 *	Bus bar CT with 250/5A, OD/ID: 62/40		384
SPCT 62/ 40 250/5 A VA 3 CL 1 *	Bus bar CT with 250/5A, OD/ID: 62/40		384
SPCT 62/ 40 300/5 A VA 3 CL 0.5 *	Bus bar CT with 300/5A, OD/ID: 62/40		384
SPCT 62/ 40 400/5 A VA 3.75 CL 0.5 *	Bus bar CT with 400/5A, OD/ID: 62/40		410
SPCT 62/ 40 400/5 A VA 5 CL 1 *	Bus bar CT with 400/5A, OD/ID: 62/40		410
SPCT 100/ 60 500/5 A VA 5 CL 1 *	Bus bar CT with 500/5A, OD/ID: 100/60		779
SPCT 100/ 60 600/5 A VA 5 CL 0.5 *	Bus bar CT with 600/5A, OD/ID: 100/60		779
SPCT 100/ 60 600/5 A VA 7.5 CL 1 *	Bus bar CT with 600/5A, OD/ID: 100/60		779
SPCT 100/ 60 800/5 A VA 10 CL 0.5 *	Bus bar CT with 800/5A, OD/ID: 100/60		844
SPCT 100/ 60 1000/5 A VA 15 CL 0.5 *	Bus bar CT with 1000/5A, OD/ID: 100/60		961
SPCT 100/ 60 1200/5 A VA 15 CL 0.5 *	Bus bar CT with 1200/5A, OD/ID: 100/60		1064
SPCT 140/100 800/5 A VA 15 CL 0.5	Bus bar CT with 800/5A, OD/ID: 140/100		1077
SPCT 140/ 100 1000/5 A VA 15 CL 0.5	Bus bar CT with 1000/5A, OD/ID: 140/100		1140
SPCT 140/ 100 1200/5 A VA 15 CL 0.5	Bus bar CT with 1200/5A, OD/ID: 140/100		1192
SPCT 140/ 100 1250/5 A VA 15 CL 0.5	Bus bar CT with 1250/5A, OD/ID: 140/100		1192
SPCT 140/ 100 1500/5 A VA 15 CL 0.5	Bus bar CT with 1500/5A, OD/ID: 140/100		1288
SPCT 140/ 100 1600/5 A VA 15 CL 0.5	Bus bar CT with 1600/5A, OD/ID: 140/100		1316
SPCT 140/ 100 2000/5 A VA 15 CL 0.5	Bus bar CT with 2000/5A, OD/ID: 140/100		1449
SPCT 140/ 100 2500/5 A VA 15 CL 0.5	Bus bar CT with 2500/5A, OD/ID: 140/100		1578
SPCT 140/ 100 3000/5 A VA 15 CL 0.5	Bus bar CT with 3000/5A, OD/ID: 140/100		1765
SPCT 140/ 100 3500/5 A VA 15 CL 0.5	Bus bar CT with 3500/5A, OD/ID: 140/100	1898	
SPCT 140/ 100 4000/5 A VA 15 CL 0.5	Bus bar CT with 4000/5A, OD/ID: 140/100	2056	

Accessory - Square type CT

AC-SPCT-DRAIL-01	Accessory - Din Rail mounting plate for Busbar CT	39269099	662
------------------	---	----------	-----

Note: * UL variant available

Pricelist 2021 (w.e.f. May 20th, 2021)



CURRENT TRANSFORMER - CABLE TYPE

- Available range: 30A - 600A
- Rated Burden: 1.5 /5VA
- Accuracy: Class 1 to 5
- Panel mount

Product Code	Description	HSN Code	Unit MRP
CURRENT TRANSFORMER - CABLE TYPE			
RCT-T-D30-30/5 A VA 1.5 CL5	Ring type CT with 30/5A, Inner diameter - 30mm	85043100	544
RCT-T-D30-30/5 A VA 5 (2T) CL5	Ring type CT with 30/5A, Inner diameter - 30mm		546
RCT-T-D30-50/5 A VA 5 CL5	Ring type CT with 50/5A, Inner diameter - 30mm		544
RCT-T-D30-75/5 A VA 5 CL5	Ring type CT with 75/5A, Inner diameter - 30mm		545
RCT-T-D30-100/5 A VA 5 CL1	Ring type CT with 100/5A, Inner diameter - 30mm		545
RCT-T-D30-150/5 A VA 5 CL1	Ring type CT with 150/5A, Inner diameter - 30mm		587
RCT-T-D50-200/5 A VA 5 CL1	Ring type CT with 200/5A, Inner diameter - 50mm		587
RCT-T-D50-250/5 A VA 5 CL1	Ring type CT with 250/5A, Inner diameter - 50mm		587
RCT-T-D50-300/5 A VA 5 CL1	Ring type CT with 300/5A, Inner diameter - 50mm		587
RCT-T-D50-400/5 A VA 5 CL1	Ring type CT with 400/5A, Inner diameter - 50mm		561
RCT-T-D50-500/5 A VA 5 CL1	Ring type CT with 500/5A, Inner diameter - 50mm		587
RCT-T-D50-600/5 A VA 5 CL1	Ring type CT with 600/5A, Inner diameter - 50mm		587



CURRENT TRANSFORMER - TAPE WOUND

- Available range: 30A - 1600A
- Rated Burden: 1.5 /5/10VA
- Accuracy: Class 0.5 to 5

Product Code	Description	HSN Code	Unit MRP
CURRENT TRANSFORMER - TAPE WOUND			
TWCT-T-D35 30/5A VA 1.5 CL 5	Ring type CT with 30/5A, Inner diameter - 30mm	85043100	475
TWCT-T-D35 50/5A VA 5 CL 5	Ring type CT with 30/5A, Inner diameter - 30mm		467
TWCT-T-D35 75/5A VA 5 CL 5	Ring type CT with 50/5A, Inner diameter - 30mm		393
TWCT-T-D35 100/5A VA 5 CL 1	Ring type CT with 75/5A, Inner diameter - 30mm		550
TWCT-T-D35 150/5A VA 5 CL 1	Ring type CT with 100/5A, Inner diameter - 30mm		440
TWCT-T-D55 150/5A VA 5 CL 1	Ring type CT with 150/5A, Inner diameter - 30mm		475
TWCT-T-D55 200/5A VA 5 CL 1	Ring type CT with 200/5A, Inner diameter - 50mm		419
TWCT-T-D55 250/5A VA 5 CL 1	Ring type CT with 250/5A, Inner diameter - 50mm		424
TWCT-T-D55 300/5A VA 5 CL 1	Ring type CT with 300/5A, Inner diameter - 50mm		445
TWCT-T-D55 400/5A VA 5 CL 1	Ring type CT with 400/5A, Inner diameter - 50mm		463
TWCT-T-D65 500/5A VA 5 CL 1	Ring type CT with 500/5A, Inner diameter - 50mm		440
TWCT-T-D65 600/5A VA 5 CL 1	Ring type CT with 600/5A, Inner diameter - 50mm		472
TWCT-T-D110 800/5A VA 10 CL 0.5	Tape wound CT with 800/5A, Inner diameter - 110mm		711
TWCT-T-D110 1000/5A VA 10 CL 0.5	Tape wound CT with 1000/5A, Inner diameter - 110mm		786
TWCT-T-D120 1000/5A VA 10 CL 0.5	Tape wound CT with 1000/5A, Inner diameter - 120mm		607
TWCT-T-D120 1200 /5A VA 10 CL 0.5	Tape wound CT with 1200/5A, Inner diameter - 120mm		671
TWCT-T-D120 1600 /5A VA 10 CL 0.5	Tape wound CT with 1600/5A, Inner diameter - 120mm		795

Note:

Pricelist 2021 (w.e.f. May 20th, 2021)

AUTOMATIC POWER FACTOR CONTROLLERS



AUTOMATIC POWER FACTOR CONTROLLERS

- Single CT and 3 CT variants available
- Available with four quadrant power factor controller
- Automatic sensing of capacitor bank values
- programmable up to 1 to 8/12 stages
- Variant available with no programming & built-in VAF meter
- Variant available for RS485 MODBUS communication
- CE & RoHS certified

Product Code	Description	HSN Code	Unit MRP
AUTOMATIC POWER FACTOR CONTROLLER			
APFC148-312-90/550V-CE	Power factor controller with 3CT, 12 Stage, LCD Display, 90 to 550V AC	90328910	12241
APFC146-112-90/550V-CE <i>New</i>	Power factor controller with 1CT, 12 Stage, LCD Display, 90 to 550V AC		7853
APFC346-108-230V-CE <i>New</i>	Power factor controller with 1CT, 8 Stage, LCD Display, 85 to 270V AC		5711
APFC147-112-90/550V	Power factor controller with 1CT, 12 Stage, LED Display, 90 to 550V AC		8817
APFC147-108-90/550V	Power factor controller with 1CT, 8 Stage, LED Display, 90 to 550V AC		7651
APFC347-108-230V	Power factor controller with 1CT, 8 Stage, LED Display, 85 to 270V AC		5711

CAPACITORS

New



HEAVY DUTY CAPACITORS

- Fast discharge resistors
- Over pressure disconnection system (Only above 10KVAR)
- Internal fuse for protection
- Polyurethane self-extinguishing resin V0, developed under standard UL94
- DRY type
- CE & RoHS certified

Product Code	Description	HSN Code	Unit MRP
HEAVY DUTY CAPACITORS			
HDCAP 60x200 01 440-CE	HD 1.0KVAR 440V, 50HZ	85321000	1310
HDCAP 60x200 2.5 440-CE	HD 2.5KVAR 440V, 50HZ		1508
HDCAP 70x260 05 440-CE	HD 5.00KVAR, 440V, 50HZ		1878
HDCAP 70x260 7.5 440-CE	HD 7.50KVAR, 440V, 50HZ		2961
HDCAP-70x260-10-440-CE	HD 10.0KVAR, 440V, 50HZ		3714
HDCAP-85x260-12.5-440-CE	HD 12.5KVAR, 440V, 50HZ		4111
HDCAP-85x260-15-440-CE	HD 15.0KVAR, 440V, 50HZ		4624
HDCAP-100x260-20-440-CE	HD 20.0KVAR, 440V, 50HZ		6166
HDCAP-120x265-25-440-CE	HD 25.0KVAR, 440V, 50HZ		7340
HDCAP-120x265-30-440-CE	HD 30.0KVAR, 440V, 50HZ		8809
HDCAP-136x265-40-440-CE	HD 40.0KVAR, 440V, 50HZ		11745
HDCAP-136x345-50-440-CE	HD 50.0KVAR, 440V, 50HZ		14681
HDCAP 60x200 01 480-CE	HD 1.0KVAR 480V, 50HZ		1508
HDCAP 60x200 2.5 480-CE	HD 2.5KVAR 480V, 50HZ		1576
HDCAP 60x200 05 480-CE	HD 5.0KVAR, 480V, 50HZ		1905
HDCAP 70x260 7.5 480-CE	HD 7.5KVAR, 480V, 50HZ		3153
HDCAP-85x260-10-480-CE	HD 10.0KVAR, 480V, 50HZ		3934
HDCAP-100x260-12.5-480-CE	HD 12.5KVAR, 480V, 50HZ		4698
HDCAP-100x260-15-480-CE	HD 15.0KVAR, 480V, 50HZ		5579
HDCAP-120x265-20-480-CE	HD 20.0KVAR, 480V, 50HZ		6753
HDCAP-120x265-25-480-CE	HD 25.0KVAR, 480V, 50HZ		8221
HDCAP-136x265-30-480-CE	HD 30.0KVAR, 480V, 50HZ		9102
HDCAP-136x345-40-480-CE	HD 40.0KVAR, 480V, 50HZ		12332
HDCAP-136x345-50-480-CE	HD 50.0KVAR, 480V, 50HZ		15562
HDCAP 60x200 01 525-CE	HD 1.0KVAR 525V, 50HZ		1645
HDCAP 60x200 2.5 525-CE	HD 2.5KVAR 525V, 50HZ		1787
HDCAP 60x200 5 525-CE	HD 5.00KVAR, 525V, 50HZ		2152
HDCAP 70x260 7.5 525-CE	HD 7.50KVAR, 525V, 50HZ		3290
HDCAP-85x260-10-525-CE	HD 10.0KVAR, 525V, 50HZ		4331
HDCAP-85x260-12.5-525-CE	HD 12.5KVAR, 525V, 50HZ		4992
HDCAP-100x260-15-525-CE	HD 15.0KVAR, 525V, 50HZ		6122
HDCAP-120x265-20-525-CE	HD 20.0KVAR, 525V, 50HZ		7091
HDCAP-120x265-25-525-CE	HD 25.0KVAR, 525V, 50HZ		8662
HDCAP-136x265-30-525-CE	HD 30.0KVAR, 525V, 50HZ		9543
HDCAP-136x345-40-525-CE	HD 40.0KVAR 525V, 50HZ		12919
HDCAP-136x345-50-525-CE	HD 50.0KVAR 525V, 50HZ		16149

Note:

Pricelist 2021 (w.e.f. May 20th, 2021)

LINE MONITORING SERIES



LINE MONITORING RELAY

- 1Ø-2W, 3Ø-3W, 3Ø-4W suitable models
- Wide range of supply range available
- Neutral loss feature in selective model
- On site field programmable trip and alarm relay
- Compact space saving design
- Clear Trip indication on LED and LCD

Product Code	Description	HSN Code	Unit MRP
DIGITAL VOLTAGE PROTECTION RELAY			
900VPR-BL-U-CE	3Ø-3W, 3Ø-4W, Under / Over voltage, Phase failure, Phase sequence, Phase asymmetry, Under / Over frequency, Neutral loss, 2 x 1C/O, 85 to 270V AC / DC	85363000	4129
900VPR-2-280/600V-CE <i>New</i>	3Ø-3W, 3Ø-4W, Under / Over voltage, Phase failure, Phase sequence, Phase asymmetry, Under / Over frequency, Neutral loss, 2 x 1 C/O, Self powered		2448
900VPR-2-280/520V *	3Ø-3W, 3Ø-4W, Under / Over voltage, Phase failure, Phase sequence, Phase asymmetry, Under / Over frequency, 2 x 1 C/O, Self powered		2355
VPRD2M-BL-CE	Digital, 1Ø-2W, 3Ø-4W, Under / Over voltage, Phase failure, Phase sequence, Phase asymmetry, Under / Over frequency, With Backlight, 2 C/O DPDT		2191
ANALOG VOLTAGE PROTECTION RELAY			
VPRA2M-CE	Analog, 1Ø-2W, 3Ø-4W, Under / Over voltage, Phase failure, Phase sequence, Phase asymmetry, 2 C/O DPDT	85363000	1673
600VPR-310/520-CE	3Ø-3W, Under / Over voltage, Phase failure, Phase sequence, 1C/O		1864
600VPR-1-130/320-CE-RoHS <i>New</i>	Single Phase Voltage Protection Relay		1462
800VPR-3	3Ø-3W, Under / Over voltage, Phase failure, Phase sequence, 1 C/O		1200
PHASE SEQUENCE RELAY			
600PSR-CE	3Ø-3W, Phase failure, Phase sequence, Phase asymmetry, 1 C/O	85363000	1241
642PSR	3Ø-3W, Phase failure, Phase sequence, Phase asymmetry, DIN rail & Wall mount, 1 C/O		1047
800PSR	3Ø-3W, Phase failure, Phase sequence, Phase asymmetry, 1 C/O		729
SINGLE PHASE PREVENTER			
600SPP	3Ø-3W, Phase failure, Phase asymmetry, 1 C/O	85363000	1336
SPPA2M2	3Ø-3W, Under / Over voltage, Phase failure, Phase asymmetry, 2 C/O DPDT		1336
UNDER VOLTAGE PROTECTION RELAY			
642VTR-3	Under voltage Protection relay - 3P4W	85363000	1064
642VTR-1	Under voltage Protection relay - 1P2W		1064
AUTO SWITCH			
Auto switch-313/457V <i>New</i>	Single phase preventer with under and over voltage protection with user selectable modes	85363000	1095
Auto switch-195/400V <i>New</i>	Single phase preventer with under and over voltage protection with user selectable modes		1095

Note: * UL variant available

Pricelist 2021 (w.e.f. May 20th, 2021)

CURRENT MONITORING SERIES



CURRENT PROTECTION RELAY

- Continuous monitoring of Over and Under current in 1 phase and 3 phase
- Wide supply range of supply: 85 to 270V AC/DC
- Field programmable trip current and trip time through front panel keys
- Manual test & Reset Keys available via Front / Remote

Product Code	Description	HSN Code	Unit MRP
CURRENT PROTECTION RELAY			
900CPR-1-BL-U-CE	1Ø, Blacklight, Over / Under current monitoring, 2 x 1 C/O, 85 to 270V AC / DC	85363000	3296
900CPR-3-230V	1Ø & 3Ø, Over / Under current monitoring, Current asymmetry, 1 C/O, 230V AC		2889
900CPR-1-230V	1Ø, Over / Under current monitoring, 1 C/O, 230V AC		2426



EARTH LEAKAGE RELAY

- Type AC leakage current measurement from 30 mA to 30 A
- Highly sensitive CBCT using Nanocrystalline core
- High Sensitivity - tripping within 50 msec for 1X current and 30msec for 5X current
- Discrete LED indication for Power ON, Alarm and Fault
- Fixed variant for leakage current measurement is also available

Product Code	Description	HSN Code	Unit MRP
EARTH LEAKAGE RELAY			
900ELR-2-230V-CE	Digital earth leakage relay, Leakage Current range: 30mA to 30A, 2 x 1 C/O, 230V AC	85364900	4121
ELR-341-1	Panel Mount ELR, Leakage Current range: 30mA to 30A, 85 to 270 V AC/DC	85363000	2916
ELRA2M2-1-230V-CE	Analog earth leakage relay, Leakage current range: 30mA to 30A , 1 C/O, 230V AC	85364900	1979
ELCTR35-1-30mA-230V	Earth leakage relay with inbuilt CBCT Leakage current fixed: 30mA, 1 C/O, 230V AC	85363000	1576
ELCTR35-1-300mA-230V	Earth leakage relay with inbuilt CBCT, Leakage current fixed: 300mA, 1 C/O, 230V AC		1576
600ELR-1-30mA/500mA <i>New</i>	Analog earth leakage relay, Leakage current range: 30mA to 500mA, 1 C/O, 230V AC, 1M size	85364900	1425

Note: * UL variant available

Pricelist 2021 (w.e.f. May 20th, 2021)

Product Code	Description	HSN Code	Unit MRP
EARTH LEAKAGE RELAY ACCESSORIES			
CBCT-310-1-CE	Core balance current transformer with Dia 310mm	85364900	8417
CBCT-210-1-CE	Core balance current transformer with Dia 210mm		5829
CBCT-120-1-CE	Core balance current transformer with Dia 120mm		3287
CBCT-70-1-CE	Core balance current transformer with Dia 70mm		1274
CBCT-35-1-CE	Core balance current transformer with Dia 35mm		874



EARTH FAULT RELAY

- Continuous monitoring of fault current in 1 phase and 3 phase
- Wide supply range of supply: 85 to 270V AC/DC
- Field programmable trip current and trip time through front panel keys
- Manual test & Reset Keys available via Front / Remote
- Programmable Trip and Alarm relay
- Specialized current transformer with class 1 accuracy

Product Code	Description	HSN Code	Unit MRP
EARTH FAULT RELAY			
900EFR-BL-U-CE-ROHS	Digital earth fault relay, 2 x 1 C/O, 85 to 270V AC / DC	85363000	3940
EARTH FAULT RELAY ACCESSORIES			
EFCT 220/50 630 /1A VA1 CL1	Earth fault Current Transformer 630A, Window Size: 220x50 mm	85043100	1733
EFCT 180/35 630 /1A VA1 CL1	Earth fault Current Transformer 630A Window Size: 180x35 mm		1460
EFCT 180/35 250 /1A VA1 CL1	Earth fault Current Transformer 250A, Window Size: 180x 35 mm		1259
EFCT 140/35 160/1A VA1 CL1	Earth fault Current Transformer 160A, Window Size: 140x 35 mm		1204
EFCT 140/35 250/1A VA1 CL1	Earth fault Current Transformer 250A, Window Size: 140x35 mm		1154
EFCT 100/25 160/1A VA1 CL1	Earth fault Current Transformer 160A, Window Size: 100x25 mm		826

MOTOR & PUMP PROTECTION RELAYS



MOTOR PROTECTION RELAY

- Smart and Intelligent motor protection with continuous fault monitoring & control
- Monitors Overload as per International tripping class (NEMA)
- Specialized Current transformer for 3 phase applications
- Relays self-diagnostics improves on site troubleshooting
- Panel Mount / DIN Rail variants available
- Direct measurement of temperature in the stator winding via PTC Sensor

Product Code	Description	HSN Code	Unit MRP
MOTOR PROTECTION RELAY			
MPR-341-2	Digital panel mount motor protection relay, 2 x 1C/O, 85 to 270V AC / DC	85363000	2812
MPR-3M-2-415V	Analog motor protection relay, 2 C/O, 415V		2806
MPR-3M-2-230V	Analog motor protection relay, 2 C/O, 230V		2559
THERMISTOR PROTECTION RELAY			
TPRA2M1-1-U-CE	Thermistor protection relay for motor winding protection, 2 C/O, 90 to 270V AC / DC	85363000	2000



PUMP PROTECTION RELAY

- Smart and Intelligent device with fault monitoring and control
- Monitors Overload as per International tripping class (NEMA)
- Specialized Current transformer for 3 phase applications
- Direct current measurement upto 30A in 1 Phase products
- Built in Water level controller available in selective variant
- Two tank water level monitoring with specially designed non corrosive sensor

Product Code	Description	HSN Code	Unit MRP
PUMP PROTECTION RELAY			
PPRD-4M-3-415V	3Ø-3W, Digital pump protection relay, Push button type, Up to 80A via MPCT, 1 C/O, 415V	85363000	2469
PPRA-4M-3-415V	3Ø-3W, Analog pump protection relay, Up to 80A via MPCT, 1 C/O, 415V		2451
PPRWD-4M-1	1Ø-2W, Digital Pump Protection relay with WLC, Direct 30A		2434
PPRD-4M-1-230V	1Ø-2W, Digital Pump Protection relay, Direct 30A		2202
PPRA-4M-1-230V	1Ø-2W, Analog Pump Protection relay, Direct 30A		2175
MOTOR & PUMP PROTECTION RELAY ACCESSORIES			
MPCT D15 80A	Motor protection current transformer, up to 80A	85043100	1052
MPCT D15 40A	Motor protection current transformer, up to 40A		922
MPCT D15 10A	Motor protection current transformer, up to 10A		807

Product Code	Description	HSN Code	Unit MRP
WATER LEVEL CONTROLLER			
WLCA2M1	Water level controller, Adjustable sensitivity 1K to 200K Ohm	90328910	1754
WLCA-2M-U-CE	Two tank water level controller with single device, 2 x1 NO, 85 to 270V AC / DC		1984
WLC Sensor	Set of 3 stainless sensor		250

Note: * UL variant available

Pricelist 2021 (w.e.f. May 20th, 2021)

TIME SWITCH & ANALOG TIMERS



DIGITAL TIME SWITCH

- Daily / Weekly or Astronomical function
- 30-50 ON-OFF steps
- Relay ratings: 16A / 20A
- Min.setting unit: 1 second
- 10 years battery life

Product Code	Description	HSN Code	Unit MRP
DIGITAL TIME SWITCH			
ATS2M1-1-16A-230V-CE	DIN Rail - astronomical time switch, 1 C/O, 230V AC	91070000	2565
TS2M1-2-16A-230V-CE	DIN Rail - daily / weekly time switch, Dual Channel, 2 X 1 C/O SPDT, 230V AC		2466
TS2M1-1-16A-230V V2	DIN Rail - daily / weekly time switch, 1 C/O, 230V AC		1700
TS1W1-1-20A-230V	Wall mount - daily / weekly time switch, 1C/O, 230V AC		1444



ANALOG TIME SWITCH

- 24 hrs program
- 96 ON-OFF steps
- Min. setting unit: 15 minutes
- Power reserve: 100/ 150 hrs

Product Code	Description	HSN Code	Unit MRP
ANALOG TIME SWITCH			
MTS4M-1-16A-230V-CE	DIN Rail / Flush mount - Mechanical daily / weekly time switch, 16A relay, 1 C/O SPDT, 230V AC	91070000	1646
MTS1M1-1-16A-230V-CE	DIN Rail - Mechanical daily / weekly time switch, 16A relay, 1 C/O SPDT, 230V AC		1275



TIME RELAYS

- Single & Multifunction timers available
- Wide setting ranges
- Universal power supply
- Precise time setting
- Panel or DIN rail mount

Product Code	Description	HSN Code	Unit MRP
DIN RAIL TIMERS - 17.5MM			
600DT *	Digital multi function timer, 0.1 sec to 999hr, 1 C/O, 20 to 240V AC & 12 to 240V DC	85364900	1953
600XU-A-1-CU	Multi function timer, 0.1 sec to 3 hr, 1 C/O, 20 to 240V AC & 12 to 240V DC, UL certified		1441
600SD-2-230	Star Delta timer, 3 sec to 60 sec, 2 C/O, 230V AC		1441
642XA	Timer with On delay / Interval modes, 0sec to 60mins, 1 C/O, 20 to 240V AC & 12 to 240V DC		1117
600ST *	Single function timer, 0.1 sec to 3 hr, 1 C/O, 240V AC		1036
642SQ-A	Timer with On delay / Interval modes, 0sec to 60mins, 1 C/O, 230V AC & 24V DC		829
DIN RAIL TIMERS - 22.5MM			
800POD-180S	True power off delay timer, 180sec, 2 C/O, 110 to 240V AC	85364900	2912
800XMR	Forward - pause - reverse timer, On time: 1 to 8min Pause time: 10 to 80sec 2 C/O, 20 to 240V AC & 12 to 240V DC		2011
800XC *	Asymmetrical Cyclic timer, 1sec to 10hr, 2 C/O, 20 to 240V AC & 12 to 240V DC		1600
800XU *	Timer with On delay / Interval modes, 1sec to 30hr, 2 C/O, 20 to 240V AC & 12 to 240V DC		1455
800SD-2-110	Star Delta timer, Run time: 30 / 60sec, Change over: 50 / 100ms, 2 C/O, 110V AC		1239
800SD-2-415	Star Delta timer, Run time: 30 / 60sec, Change over: 50 / 100ms, 2 C/O, 230 to 450V AC		1182
800XA	Timer with On delay / Interval modes, 3sec to 60mins, 2 C/O, 20 to 240V AC & 12 to 240V DC		1117
800S-1-ON-60S-415	Single function, 60sec, 1 C/O, 415V AC		1090
800SD-2-230	Star Delta timer, Run time: 30 / 60sec, Change over: 50 / 100ms, 2 C/O, 230V AC		1042
800SQ-A	Timer with On delay / Interval modes, 3sec to 60mins, 1 C/O, 230V AC & 24V AC / DC		829
800S-1-ON-60S-230	Single function, 60sec, 1 C/O, 230V AC	780	
ANALOG PANEL MOUNT TIMERS			
55XC-P8 *	Plug in timer with cyclic function, 1sec to 10hr, 2 C/O, 20 to 240V AC & 12 to 240V DC	85364900	1727
55XC-T8 *	Panel mount timer with cyclic function, 1sec to 10hr, 2 C/O, 20 to 240V AC & 12 to 240V DC		1727
55XU-P *	Plug in timer with On delay / Interval modes, 1sec to 10hr, 2 C/O, 20 to 240V AC & 12 to 240V DC		1608
55XU-T *	Panel mount timer with On delay / Interval modes, 1sec to 30hr, 2 C/O, 20 to 240V AC & 12 to 240V DC		1608
55Q(V1.1)-P8-230	Plug in timer with On Delay / Interval Timer, 0sec to 60min, 230V AC		1182
55Q(V1.1)-T8-230	Panel mounted On Delay / Interval Timer, 0sec to 60min, 230V AC		1182
55ES-P8-230	Plug in timer with On delay / Interval modes, 3sec to 60min, 1 C/O, 230V AC & 24V AC / DC		934
55ES-T-230	Panel mount timer with On delay / Interval modes, 3sec to 60min, 1 C/O, 230V AC & 24V AC / DC		934



ALARM ANNUNCIATOR

- 8 Windows, 6 colours
- MODBUS RS485 MODBUS RTU serial communication
- 90 to 270VAC aux supply
- Selectable fault detection NO/NC sensing
- Programmable individual window
- Relay contacts for trip & buzzer

Product Code	Description	HSN Code	Unit MRP
WINDOWS			
AN-8-0-0-230V	Fault annunciator – 8 Window, Multicolour	85318000	7239

Note: * UL variant available

Pricelist 2021 (w.e.f. May 20th, 2021)



Head Office :

Selec Controls Pvt. Ltd.

EL-27/1, Electronic Zone, TTC Industrial Area, MIDC,
Mahape, Navi Mumbai 400710, INDIA.

Tel.: +91-22-4141 8468 / 452. Fax: +91-22-41418 408.

Email: sales@selec.com

www.selec.com

Subsidiaries:

Selec GmbH

Selec USA

Selec Australia

For more information, visit our website at : www.selec.com

- All Prices are in Indian Rupees.
- Maximum Retail Price (MRP) is inclusive of all taxes.
- Tax incidence on invoices is basis applicable GST rates.
- Product evolution is a continuous process and Selec reserves the right to modify/withdraw any product at any time without prior notice.
- Prices are subject to change without notice.
- Prices charged will be as prevailing on the date of dispatch.

Technical Support:

Email: salestech@selec.com

Tel.: +91-22-4141 8468 / 452

Monday to Saturday, 9:00AM - 5:30PM

Distributor: