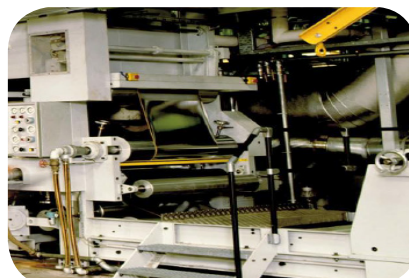


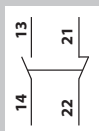
Standardised Industrial Limit Switch for Heavy Duty Application



The optimized choice for your machine

- Metal body with standard actuators ideal for heavy duty application
- The most robust head in this category
- Local availability of the 2 formats XCKM.LC (3 cable entries, 41mm fixing center) and XCKJ.LC (1 Cable entry 30x60 fixing centers)

OsiSense XCKM.LC



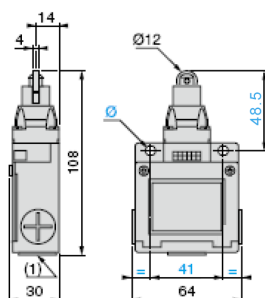
2-pole NC+NO snap action



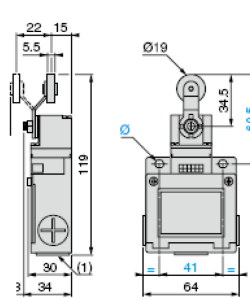
XCKM metal, fixed body, conforming to standard IEC 60947-5-1

Type Of Operator	Steel Roller Plunger	Steel Roller Lever	Steel Roller Lever Plunger Horizontal Actuation
Mechanical durability (millions of operating cycles)	10	10	10
Actuation speed (in m/s)	0.5	1.5	1.5
Product certification	CCC & CE		
Degree of protection	IP 66		
Rated operational characteristic	AC15:A300(Ue/Ie:240V/3A)/DC:Q300(Ue/Ie:250V/0.27A)		
Operating frequency	3600 cycle max/hour		
Cable entry	3 tapped entry for ISO M20 x 1.5 or PG 13.5 cable gland		
Body dimensions (mm) W x D x H	64 x 30 x 108	64 x 30 x 119	65 x 30 x 112.5
Complete switch M20 2-pole NC+NO snap action	XCKM102H29LC	XCKM116H29LC	XCKM2023H29LC
Complete switch Pg 13.5 2-pole NC+NO snap action	XCKM102LC	XCKM116LC	XCKM2023LC

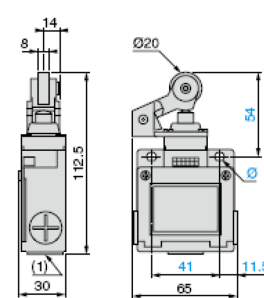
XCK M 102LC



XCK M 116LC

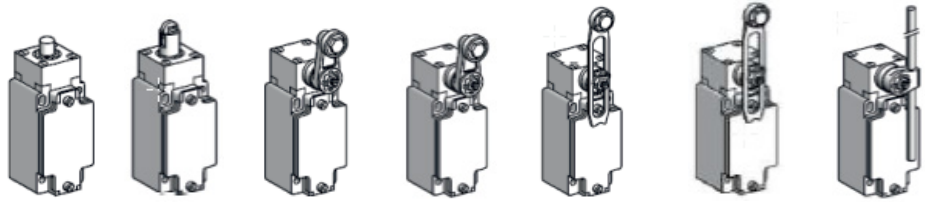
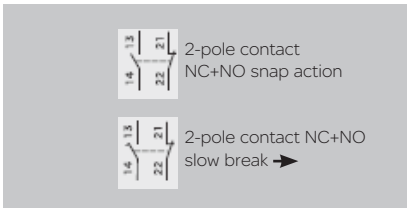


XCK M 2023LC



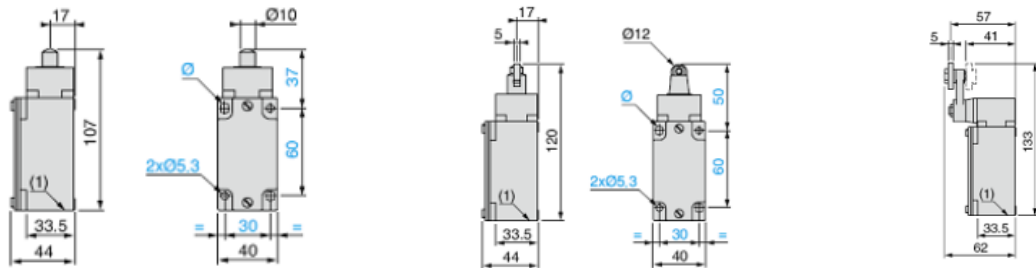
OsiSense XCKJ.LC

ISO entry for DIN EN 60900

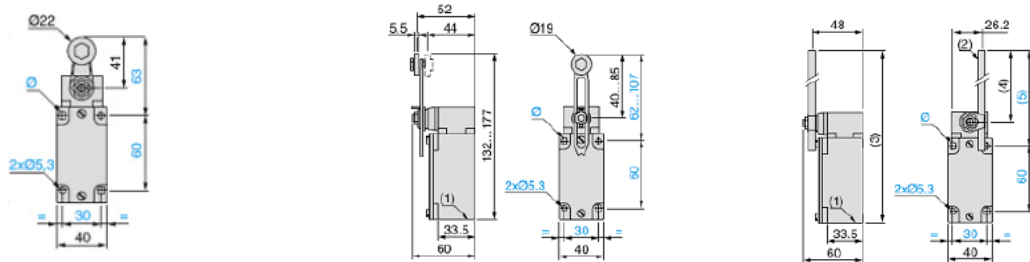


Type XCKJ metal, fixed body, conforming to standard EN 50041								
Type of operator	Metal End Plunger	Steel Roller Plunger	Thermoplastic Roller Lever	Steel Roller Lever	Variable Length Thermoplastic	Variable Length Metal Roller	Polyamide Ø 6mm rod lever L=200mm	
Mechanical durability (millions of operating cycles)	10	10	10	10	10	10	10	
Actuation speed (in m/s)	0.5	1.0	1.5	1.5	1.5	1.5	1.5	
Product certification	CE-CCC							
Degree of protection	IP 66 conforming to IEC 60529; IK 07 conforming to EN 50102							
Rated operational characteristics	AC-15; A300 (Ue = 240V, Ie = 3A)/DC-13; Q300 (Ue = 250V, Ie = 0.27A)							
Cable entry (1)	1 tapped entry for ISO M20 x 1.5 or Pg 13.5 cable gland							
Fixing centers (mm)	30 x 60							
Body dimensions (mm) W x D x H	40 x 44 x 77							
Complete switch M20	2-pole NC+NO snap action	XCKJ161H29LC	XCKJ167H29LC	XCKJ10511H29LC	XCKJ10513H29LC	XCKJ10541H29LC	XCKJ10543H29LC	XCKJ10559H29LC
	2-pole NC+NO slow action	→XCKJ561H29C	→XCKJ567H29C	→XCKJ50511H29C	→XCKJ50513H29C	→XCKJ50541H29C	→XCKJ50543H29LC	→XCKJ50559H29C
Complete switch Pg 13.5	2-pole NC+NO snap action	XCKJ161LC	XCKJ167LC	XCKJ10511LC	XCKJ10513LC	XCKJ10541LC	XCKJ10543LC	XCKJ10559LC
	2-pole NC+NO slow action	→XCKJ561C	→XCKJ567C	→XCKJ50511C	→XCKJ50513C	→XCKJ50541C	→XCKJ50543LC	→XCKJ50559C

Dimension		
XCKJ161LC	XCKJ167LC	XCKJ1051LC
→XCKJ561C	→XCKJ567C	→XCKJ5051C
XCKJ161H29LC	XCKJ167H29LC	XCKJ1051H29LC
→XCKJ561H29C	→XCKJ567H29C	→XCKJ5051H29C



XCKJ1053LC	XCKJ10541LC	XCKJ10559LC
→XCKJ5053C	→XCKJ50541C	→XCKJ50559C
XCKJ1053H29LC	XCKJ10541H29LC	XCKJ10559H29LC
→XCKJ5053H29C	→XCKJ50541H29C	→XCKJ50559H29C



Other versions: Please consult our Customer Care Center

For more information visit our website at www.schneider-electric.co.in
 Schneider Electric India Pvt. Ltd. (A 100% subsidiary of Schneider Electric Industries SAS)

Corporate office: 9th Floor, DLF Building No. 10, Tower C, DLF Cyber City, Phase II,

Gurgaon - 122002, Haryana, Tel: 0124 3940400, Fax: 0124 4222036

Customer Care Center: Toll-free numbers: 1800 180 1707, 1800 103 0011, General number: 0124 4222040

Email: in-care@schneider-electric.com